

# KATONE GLUE-DOWN LVT

tilebar LVT



## POWERED BY PERFORMANCE

The Katone Collection innovatively combines texture, color, and pattern to create a product that allows customers to express any vision. Our product collection includes high definition wood and stone visuals. The combination of Katone's ProTx™ UV-cured top-coat finish, which provides industry leading durability, 28mil wear layer (also available on special requests with a 40mil wear layer), and fiberglass layer provides unmatched dimensional stability. The result is an LVT solution that can be used with confidence in heavy traffic commercial spaces and even residential applications.

## WHY KATONE LVT?

- High-Definition designs for any style or decor
- Easy glue down installation
- Great for both residential and commercial spaces
- Proprietary ProTx™ UV-cured urethane topcoat protects against abrasions and provides industry-leading scratch, scuff, stain, and chemical resistance
- 28 mil industry-leading wear layer (40 mil available by special order)
- Lifetime warranty for residential applications
- In stock & Ready to Ship



## WOOD LOOKS



CANTAL OAK  
TAOS



AMERICAN  
CHERRY LEGACY



MAPLE  
HONEYSUCKLE



WASH OAK  
WHITE



HIGHLAND OAK  
BRINED



ENCHANTED OAK  
DRIFT



MODERN OAK  
BLANCHED



ACACIA  
BROWN SUGAR



HEARTWOOD  
ASH

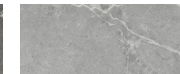


AGED OAK  
PEPPERCORN

## STONE LOOKS



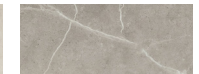
CHAUNY MARBLE  
DARK GRAY



CHAUNY MARBLE  
MEDIUM GRAY



CHAUNY MARBLE  
MEDIUM BEIGE



CHAUNY MARBLE  
DARK BEIGE



RIVERSTONE  
SAND



RIVERSTONE  
CAMEL



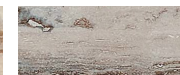
RIVERSTONE  
FOSSIL



RIVERSTONE  
ESPRESSO



RIVERSTONE  
CREMA

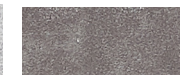


RIVERSTONE  
AZULENE

## CONCRETE LOOKS



CONCRETO  
SILVER



CONCRETO  
GRAFITO



CONCRETO  
OBSIDIAN



CONCRETO  
PEARL



CONCRETO  
STEEL



CONCRETO  
BEIGE

# KATONE GLUE-DOWN LVT



COLORS	28 MIL	40 MIL
Highland Oak Brined	•	•
Acacia Brown Sugar	•	•
Cantal Oak Taos	•	•
American Cherry Legacy	•	•
Maple Honeysuckle	•	•
Wash Oak White	•	•
Enchanted Oak Drift	•	•
Modern Oak Blanched	•	•
Heartwood Ash	•	•
Aged Oak Peppercorn	•	•
Concerto Silver	•	•
Concerto Grafito	•	•
Concreto Obsidian	•	•
Concreto Pearl	•	•
Concreto Steel	•	•
Concreto Beige	•	•
Riverstone Sand	•	•
Riverstone Camel	•	•
Riverstone Fossil	•	•
Riverstone Crema	•	•
Riverstone Azulene	•	•
Riverstone Espresso	•	•
Chauny Marble Medium Beige	•	•
Chauny Marble Dark Beige	•	•
Chauny Marble Dark Gray	•	•
Chauny Marble Medium Gray	•	•
• In Stock   • Available to Order in 40mil		
* Minimum order 1 palette with an 8-12 week lead time		

TECHNICAL DATA	28 MIL (IN STOCK)	40 MIL (SPECIAL ORDER)
Available Sizes	18" x 36"   6" x 48"	18" x 36"   6" x 48"
Construction	Heavy Duty Luxury Vinyl Tile	Heavy Duty Luxury Vinyl Tile
Classification	ASTM F1700 Class III, Type B	ASTM F1700 Class III, Type B
Total Thickness	2.5mm (0.100")	3.0mm (0.120")
Wear Layer Thickness	28mil (0.70mm)	40mil (1.0mm)
Edge Treatment	Micro-Bevel	Micro-Bevel
Finish	ProTx™	ProTx™
Colors	26	26
Application Type	Commercial Glue Down	Commercial Glue Down
Adhesive	Tilebar Trowel or Tilebar Roll	Tilebar Trowel or Tilebar Roll
Backing Color	Black	Black
Pieces per Carton	8 pcs (18x36)   18 pcs (6x48)	8 pcs (18x36)   18 pcs (6x48)
Weight per Carton	31.3 lbs	37.37 lbs
Square Feet per Carton	36 ft	36 ft
Cartons Per Palette	48 (18x36)   66 (6x48)	40 (18x36)   54 (6x48)

TESTING SPECIFICATIONS	28 MIL + 40 MIL
Flexibility (ASTM F137):	Passes - 1" Mandrel - No Crack / Break
Dimensional Stability (ASTM F2199):	Passes - Max 0.020 in/lin ft
Squareness (ASTM F540):	Passes - Max 0.010"
Static Load (ASTM F970 mod.):	Passes - Modified Test (anything beyond 250 PSI) = 2,000 PSI; Residual Indent ≤ 0.005"
Residual Indentation (ASTM F1914):	Passes - < 8% Avg / 10% Single Value
Flooring Radiation Panel (ASTM E648):	Passes - Class 1; ≥ 0.45 watts / cm2
Smoke Density (ASTM E662):	Passes - ≤ 450
Slip Resistance (ASTM D2047):	Passes - SCOF ≥ 0.6
Resistance to Light (ASTM 1515):	Passes - ΔΣ ≤ 8.0
Chemical Resistance (ASTM F925):	Excellent
Resistance to Heat (ASTM F1514):	Passes