

OPTORO RIGID CORE CLICK LVT

tilebar LVT



POWERED BY PERFORMANCE

Representing the industry's best flooring features, Optoro LVT bridges the gap between luxe natural flooring and the ease of modern maintenance. Luxurious benefits include waterproof micro-beveled panels, sound-dampening acoustic backing, UNILIN angle-drop installation, dimensionally stable and can be used in 3 season rooms, and industry-leading wear layer durability.

WHY OPTORO LVT?

- Acoustical backing layer provides sound reduction (floor to floor)
- Backing provides comfort-under-foot without sacrificing durability
- Easy to install
- Proprietary ProTX™ UV-cured urethane topcoat protects against abrasions and provides industry-leading scratch, scuff, stain, and chemical resistance
- State-of-the-art print technology
- Waterproof
- Resists indentation
- More affordable than natural materials with greater ROI
- Less maintenance



WOOD LOOKS



CANTAL OAK
TAOS



AMERICAN
CHERRY LEGACY



MAPLE
HONEYSUCKLE



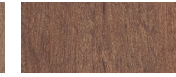
WASH OAK
WHITE



HIGHLAND OAK
BRINED



ENCHANTED OAK
DRIFT



MODERN OAK
BLANCHED



ACACIA
BROWN SUGAR



HEARTWOOD
ASH



AGED OAK
PEPPERCORN



MODERN OAK
BLANCHED



ACACIA
BROWN SUGAR



HEARTWOOD
ASH



AGED OAK
PEPPERCORN

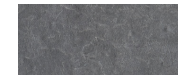


MODERN OAK
BLANCHED

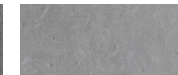


ACACIA
BROWN SUGAR

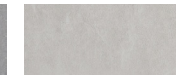
STONE LOOKS



RIVERSTONE
SAND



RIVERSTONE
SAND



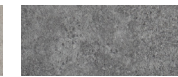
RIVERSTONE
FOSSIL



RIVERSTONE
ESPRESSO



RIVERSTONE
CREMA



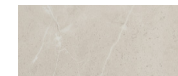
RIVERSTONE
AZULENE



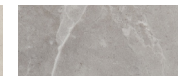
CHAUNY MARBLE
DARK GRAY



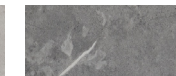
CHAUNY MARBLE
MEDIUM GRAY



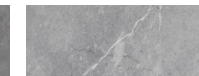
CHAUNY MARBLE
MEDIUM BEIGE



CHAUNY MARBLE
DARK BEIGE



CONCERTO
OBSIDIAN



CONCERTO
PEARL

OPTORO RIGID CORE CLICK LVT

tilebarLVT

COLORS	SIZE	12 MIL	28 MIL
Spice Birch Moon	6x48	●	●
Scarlet Oak Fawn	6x48	●	●
Amur Maple Monticello	6x48	●	●
Tekapo Oak Scotch	6x48	●	●
Scarlet Oak Coppertone	6x48	●	●
Driftwood Rialto	6x48	●	●
Oregon Maple Tualatin	6x48	●	●
Spice Birch Dockside	6x48	●	●
Spice Birch Meadow	6x48	●	●
Tekapo Oak Loft	6x48	●	●
Brazilian Walnut Cocoa	6x48	●	●
Bur Oak Brindle	6x48	●	●
Limed Oak Harbor	6x48	●	●
Scarlet Oak Studio	6x48	●	●
Bur Oak Veranda	6x48	●	●
Spice Birch Toast	6x48	●	●
Trail Slate Black	12x24	●	●
Trail Slate Dark Gray	12x24	●	●
Trail Slate Light Gray	12x24	●	●
Trail Slate Beige	12x24	●	●
Juneau Sandstone Dark Beige	12x24	●	●
Juneau Sandstone Dark Gray	12x24	●	●
Juneau Sandstone Medium Gray	12x24	●	●
Juneau Sandstone Light Gray	12x24	●	●
Chauny Marble Beige	12x24	●	●
Chauny Marble Dark Beige	12x24	●	●
Chauny Marble Dark Gray	12x24	●	●
Chauny Marble Medium Gray	12x24	●	●
● In Stock ● Available to Order			

TECHNICAL DATA	28 MIL	12 MIL
Available Sizes:	12" x 24" 6" x 48"	12" x 24" 6" x 48"
Construction:	Rigid Core Luxury Vinyl Tile	Rigid Core Luxury Vinyl Tile
Classification:	ASTM F3261 Class I, Type B, Grade I, Backing Class B	ASTM F3261 Class I, Type B, Backing Class B
Total Thickness:	5.0mm (0.200") (Includes 1.0mm Acoustic Backing)	4.5mm (0.180") (Includes 1.0mm Acoustic Backing)
Wear Layer Thickness:	28mil (0.70mm)	12 mil (0.30")
Edge Treatment:	Micro-Bevel	Micro-Bevel
Finish:	ProTx™	ProTx™
Color:	28	28
Installation Method:	Rigid Core - Click	Rigid Core - Click
Locking System:	UNILIN Angle/Drop	UNILIN Angle/Drop
Backing Color:	Black	Black
Pieces per Carton:	14 pcs (12x24) 14 pcs (6x48)	14 pcs (12x24) 14 pcs (6x48)
Weight per Carton:	45.76 lbs (12x24) 45.1 lbs (6x48)	40.7 lbs (12x24) 39.6 lbs (6x48)
Square Feet per Carton:	28.04 ft (12x24) 27.39 ft (6x48)	28.04 ft (12x24) 27.39 ft (6x48)
Cartons per Pallet:	54	60 (12x24) 66 (6x48)
Locking System:	UNILIN Angle/Angle	UNILIN Angle/Angle

TESTING SPECIFICATIONS	28 MIL + 12 MIL
Dimensional Stability (ASTM F2199):	Passes - Max 0.020 in./lin ft
Squareness (ASTM F540):	Passes - Max ± 0.010
Flatness (ISO 24337)	Passes
Opening (ISO 24337)	Passes
Ledging (ISO 24337)	Passes
Residual Indentation (ASTM F1914):	Avg. ≤ 0.007 in. (0.18 mm) No puncture thru wear layer/décor to Rigid Core
Static Load (ASTM F970 mod.):	Passes - Modified Test (anything beyond 250 PSI) = 1500 PSI; Residual Indent ≤ 0.005"
Acoustics (ASTM E492)	54 - Over 6" Concrete Slab 68 - Over 6" Concrete Slab and Drop Ceiling
Flooring Radiant Panel (ASTM E648):	Passes - Class 1; ≥ 0.45 watts/cm2
Smoke Density (ASTM E662):	Passes - ≤ 450
Slip Resistance (ASTM D2047):	Passes - SCOF≥ 0.6
Resistance to Light (ASTM F1515):	Passes - ΔΣ≤ 8.0
Chemical Resistance (ASTM F925):	Excellent
Resistance to Heat (ASTM F1514):	Passes
Castor Chair (EN 425)	Passes